

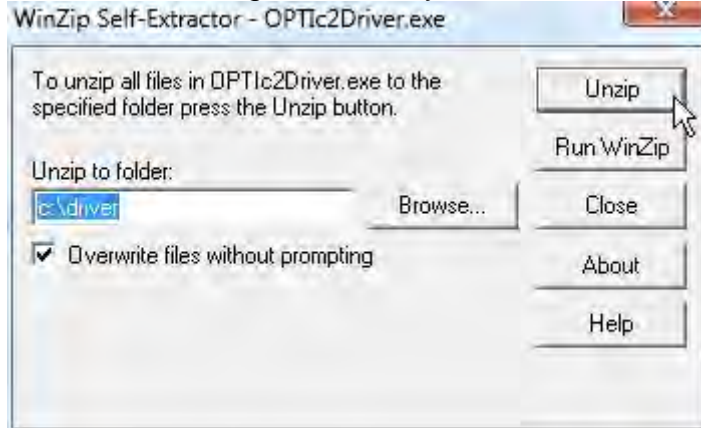
OPTIc2 Driver installation (Windows Vista)

Hint: You will need administrator rights to install a driver!

1. Put a **ALGE** CD in your PC.

If you do not have an **Alge** CD, you have to download it from the **Alge** Homepage www.alge-timing.com.

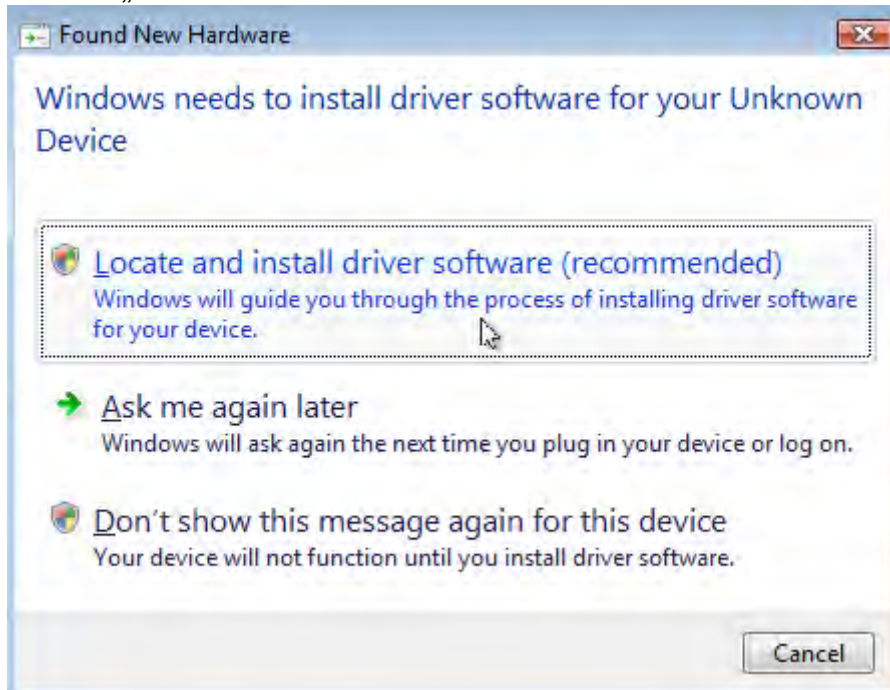
After downloading the driver, you have to extract it: press unzip



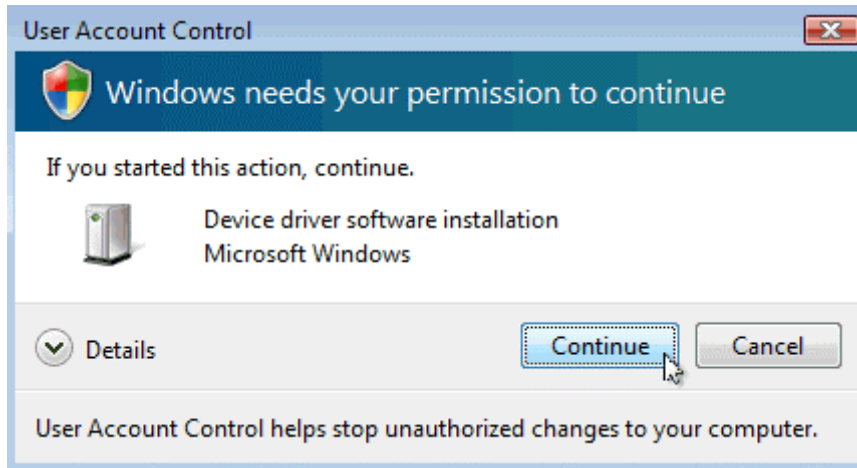
2. Connect the OPTIc2 with your PC and connect the power supply.

Please wait until Windows finished searching for the driver. The following window should open.

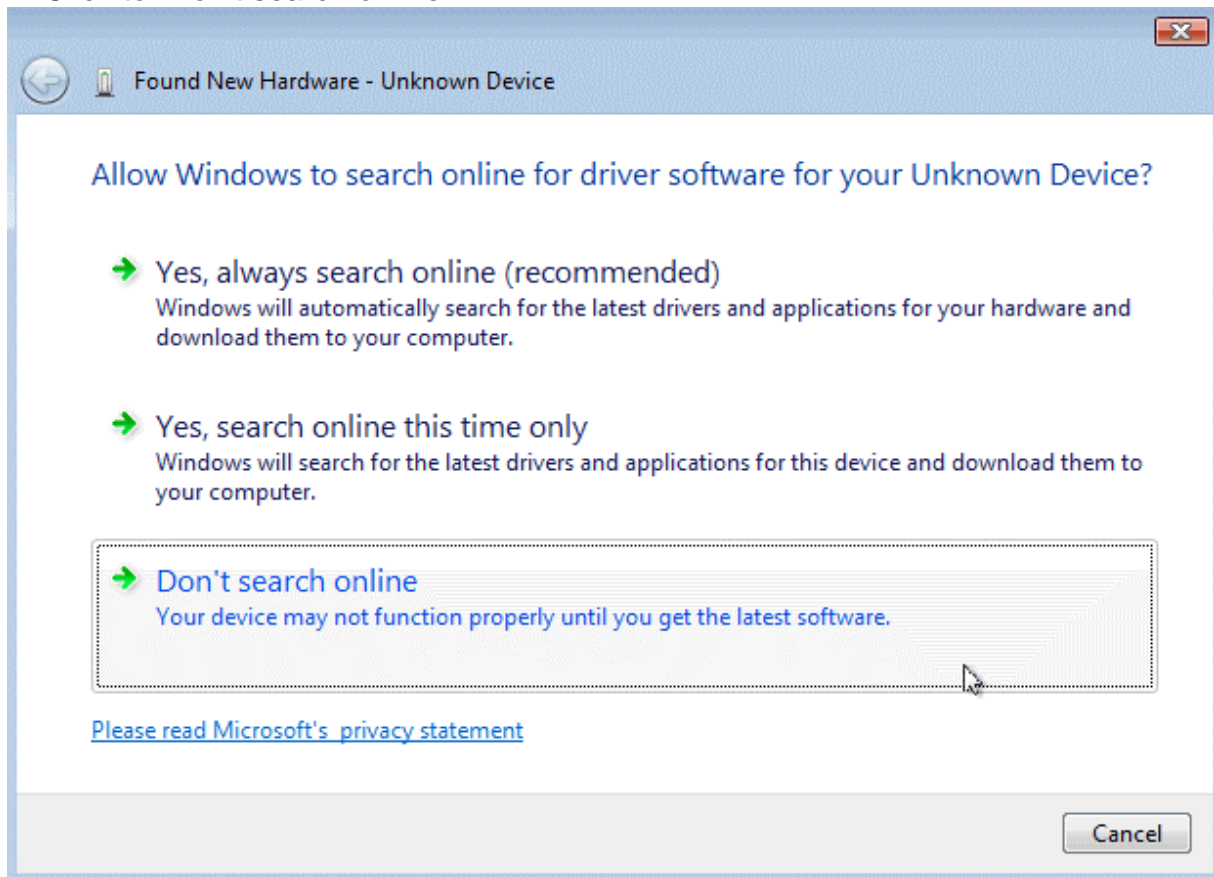
Click to „Locate and install driver“



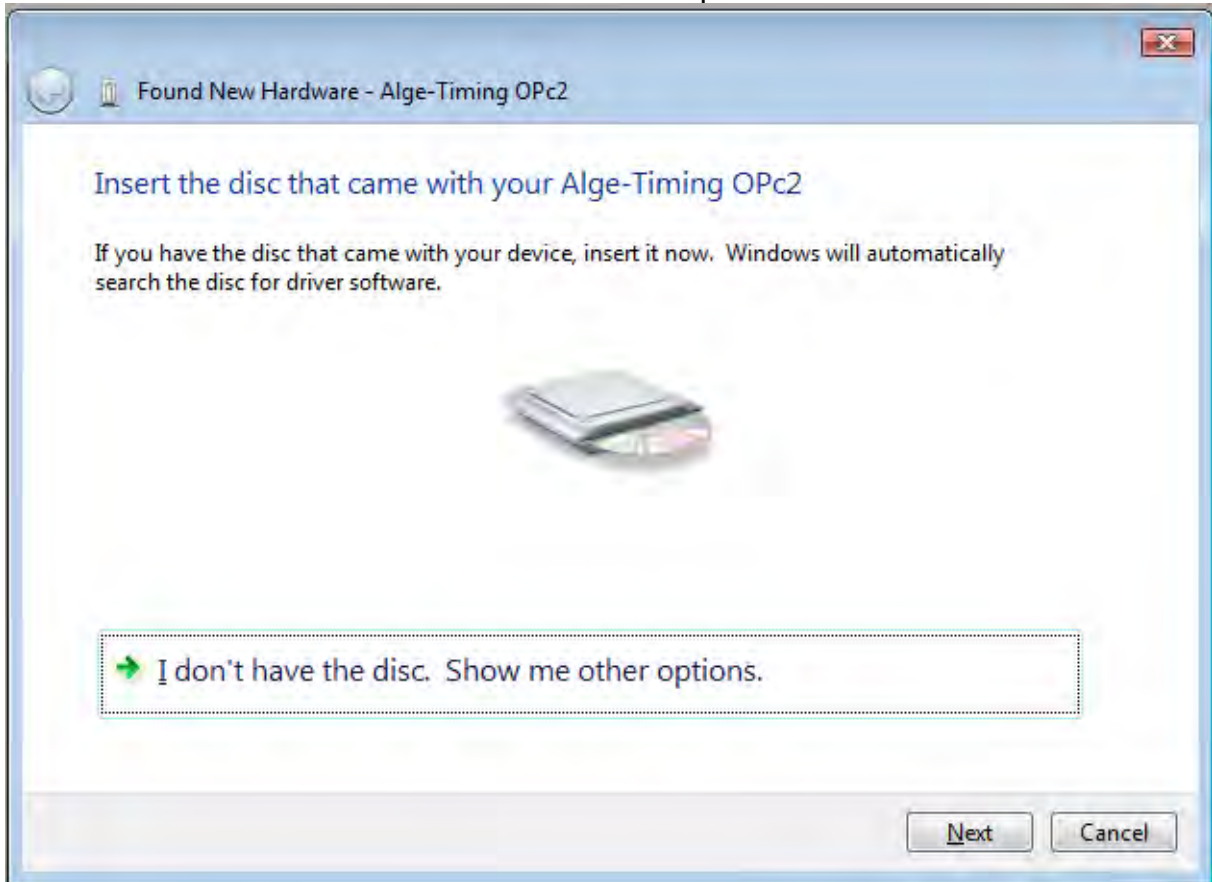
3. Click to "Continue"



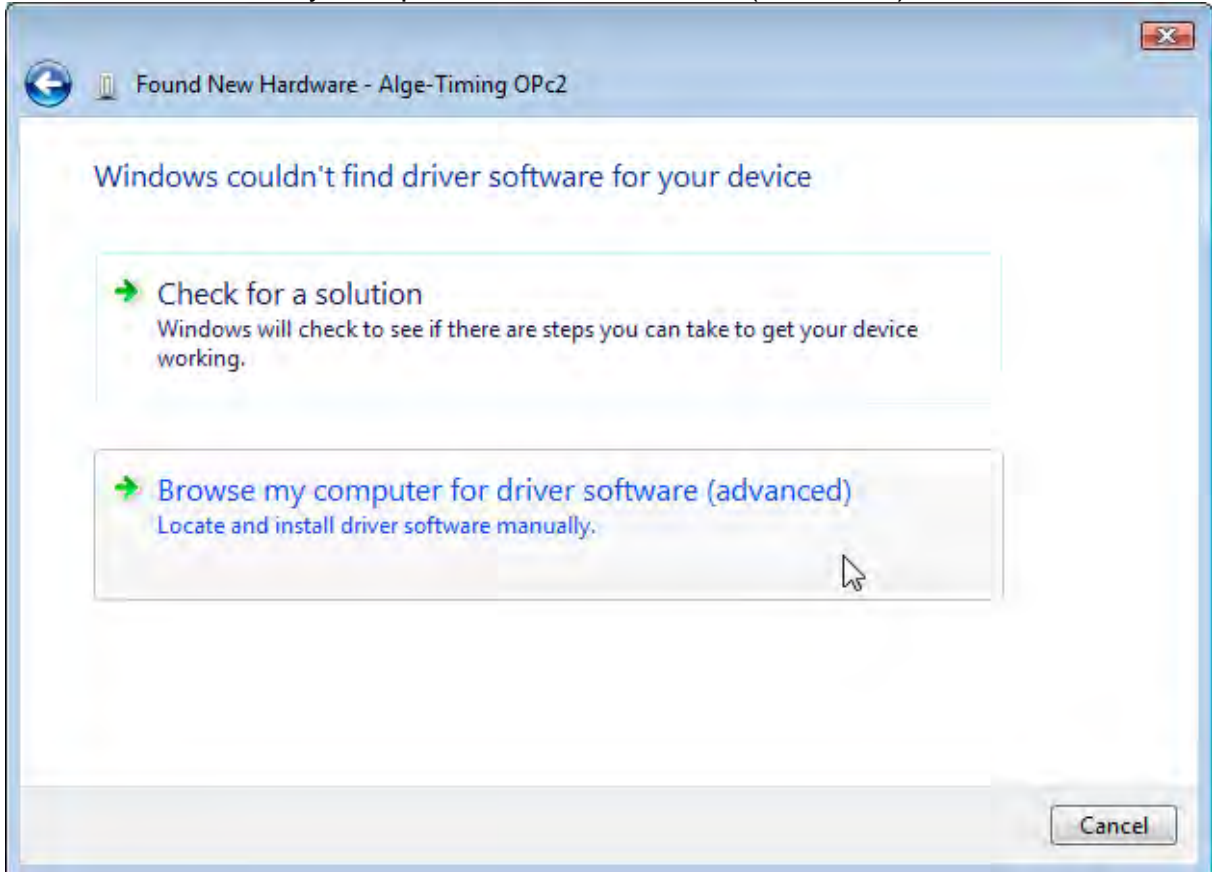
4. Click to "Don't search online"



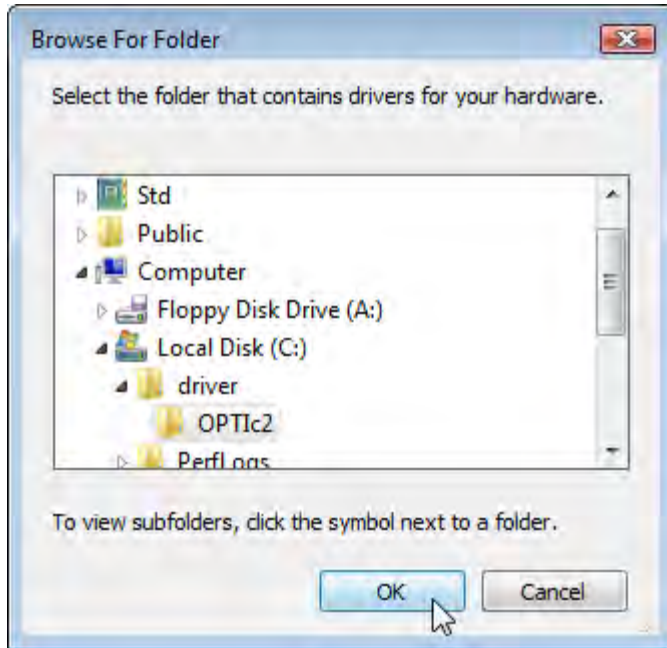
5. Click to I don't have the disc. Show me other options”



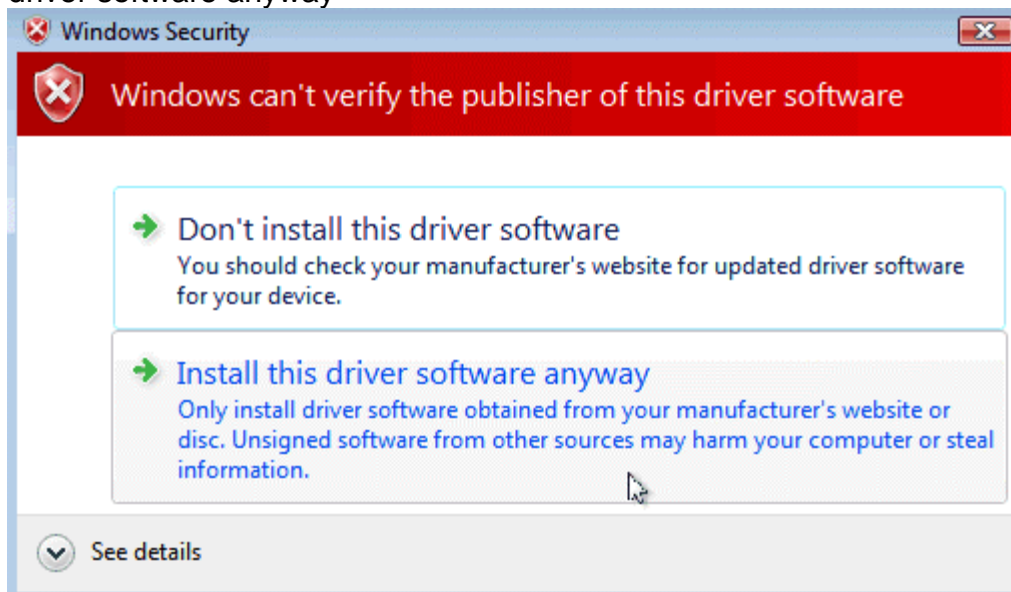
6. Click to “Browse my Computer for driver software (advanced)”



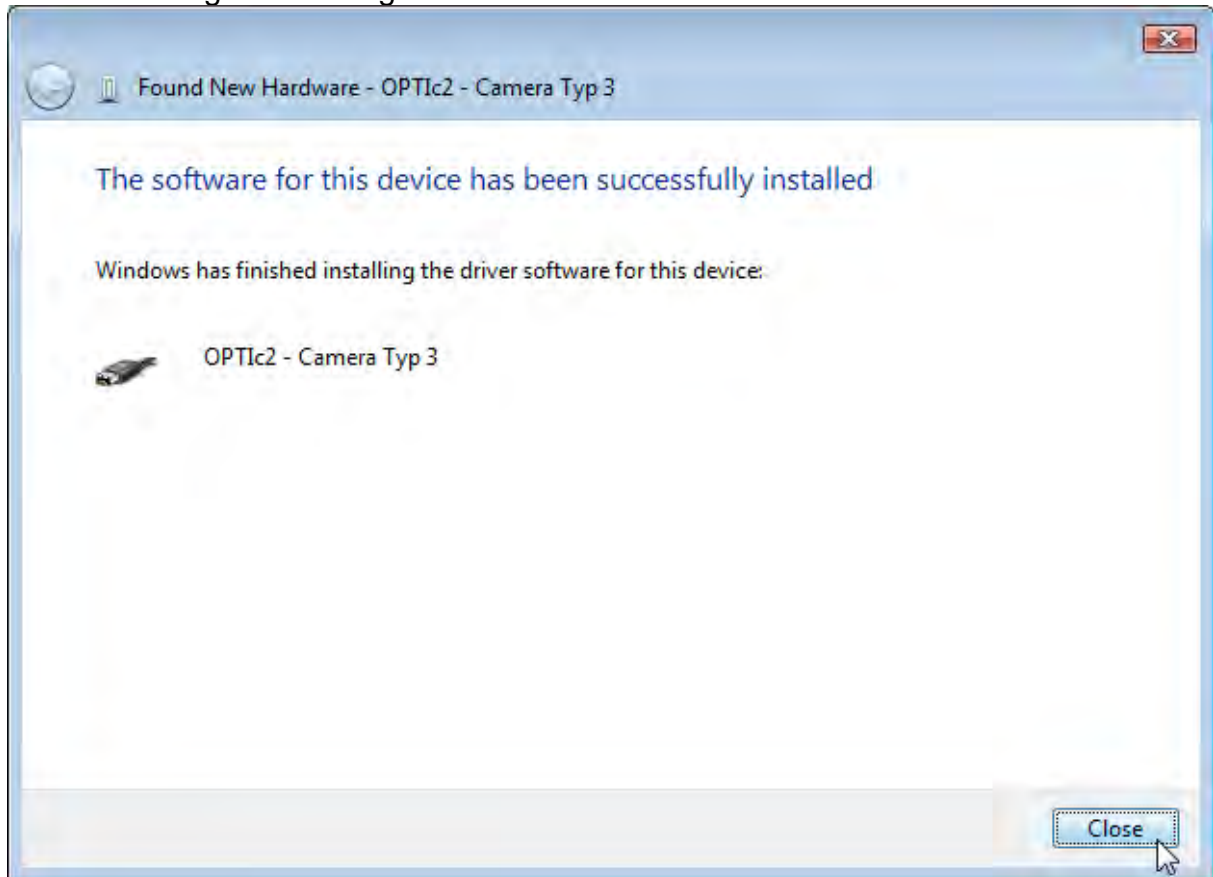
7. Click to “search “
Then choose the driver location and click “ok” and “next”



8. Please confirm that you really want to install this driver and click to “Install this driver software anyway”



9. You should get a message that the driver is correct installed. Click to “Close”



10. You can check if the driver is correct installed. Go to Start/ Control panel/System and Maintenance/ Device Manager.

